



Follow us on Facebook



Follow us on YouTube



Follow us on WeChat



Download "Hangcha Forklift" App



ISO45001:2018



ISO14001:2015



ISO9001:2015



HANGCHA trucks conform to the European Safety Requirements.

HANGCHA GROUP CO., LTD.

Factory site: 666 Xiangfu Road, Hangzhou, Zhejiang, China (311305)

Tel: +86-571-88926735 88926755
Fax: +86-571-88926789 88132890

sales@hcforklift.com www.hcforklift.com

HANGCHA GROUP CO., LTD. reserves the right to make any changes without notice concerning colors, equipment, or specifications detailed in this brochure, or to discontinue individual models. The colors of trucks, delivered may differ slightly from those in brochures.



AUTHORIZED DEALER

XE SERIES

ELECTRIC FORKLIFT TRUCK WITH LITHIUM POWER

With capacity of 1,500 to 3,800kg

XE
SERIES



XE SERIES



TAKE ON THE BIG JOBS.

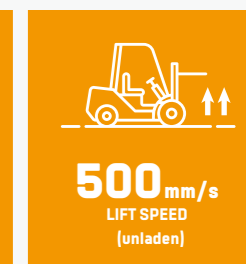
Following the family design of electric forklifts, they are provided with some key parts compatible with internal combustion forklifts, and optimized mainly on the overall performance, ergonomics, reliability, maintenance, outdoor operation ability and load capacity in a bid to meet customers' use scenarios of internal combustion forklifts. The enhanced model is capable of meeting the application demand of users in heavy-duty working conditions.

STYLISH EXTERIOR

- Following the family exterior design of XH and XC lithium battery forklifts;
- Boasting smooth and powerful contour lines, and simple and elegant vehicle body, and presenting both fashion and steadiness as a whole.

ENERGY-SAVING AND EFFICIENT

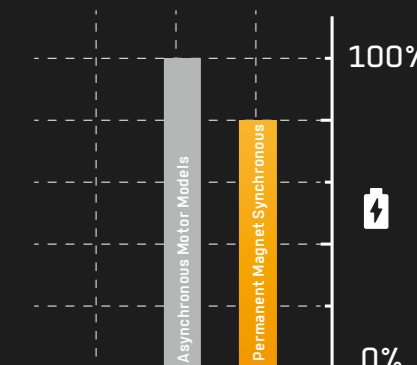
- An efficient high-torque motor together with a high speed ratio gearbox significantly improves the travel speed, gradeability and lifting speed;
- The air-cooled fan built in the travel and lifting motors allow better heat dissipation and more thorough performance realization;
- Oil pump reducers are introduced in the oil pump devices for the first time, enabling the lifting motor to work in a more efficient and more energy-saving manner;



TAKE ADVANTAGE OF MORE POWER

With the **80V dual permanent magnet synchronous motor system** with higher power density, as well the highly fitted speed reducer, motors and electrical control, under the same operating conditions, compared with the traditional asynchronous motor model, the energy consumption is reduced by 15%-20%.

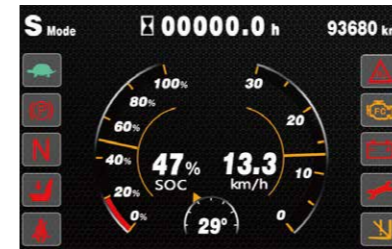
15-20%
ENERGY SAVING





COMFORTABLE EXPERIENCE

- With the advantages of lithium battery forklifts, this ergonomically designed forklift enables a wide view and a large operation space.
- The optional electronic handbrake allows more comfortable driving experience.
- The color-screen instruments are designed to have clear and intuitive graphic interfaces.



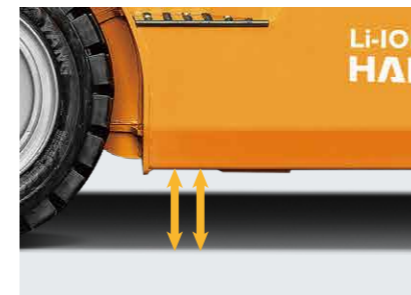
Color-screen instruments



Ergonomically designed forklift enables a wide view

RELIABLE AND DURABLE

- The enhanced drive axle and gearbox with the mast, steering axles with tapered roller bearing (for the heavy-duty model) and big tires for internal combustion forklifts can meet the demand of application in heavy-duty working conditions;
- Low center of gravity and high load margin are designed for more stable working;
- Verified in accordance with double standards of electric forklifts and internal combustion forklifts, with the enhanced test strength higher than that for the internal combustion standard, this forklift is reliable and durable.



Ground clearance increased



ADAPTABILITY TO DIFFERENT SCENARIOS



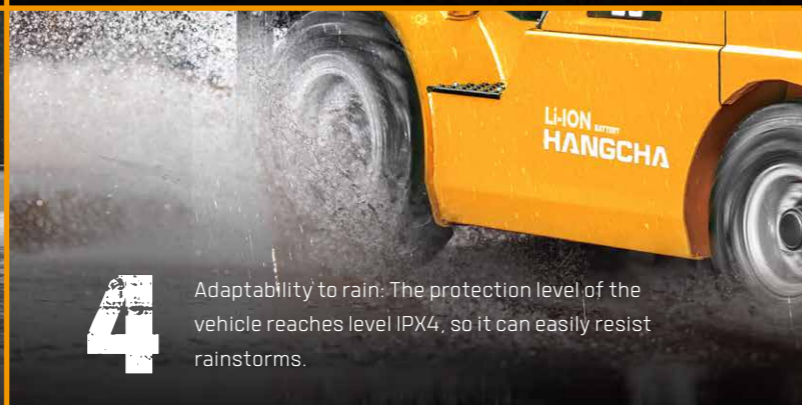
1 Smooth driving: Increased distance from the ground enables the forklift to adapt to rugged roads outdoors.



Turning radius 2035-2350mm
2 Flexible turning: With a small turning radius, the forklift can flexibly move in indoor environments such as cold stores (optional), etc.



3 Adaptability to cold weather: For the standard configuration, the battery is equipped with an electric heating module to ensure normal operation in cold weather.



4 Adaptability to rain: The protection level of the vehicle reaches level IPX4, so it can easily resist rainstorms.



KEEP AN EYE ON EVERYTHING

Hangcha FIMS is a system that provides you with real-time information about forklift truck and driver. Whether you have dozens or hundreds of forklift trucks across multiple sites, you can get access to collecting, monitoring and evaluating all the fleet data at anytime and anywhere.

» Features

- ▶ Access Control
- ▶ GPS Tracking
- ▶ Remote Monitoring
- ▶ Maintenance Reminder
- ▶ Vehicle Management
- ▶ Vibration Monitoring
- ▶ Pre-shift Check (Optional)
- ▶ Shift Management (Optional)
- ▶ OpenAPI (Optional)

LITHIUM POWERED

EMPOWER YOURSELF
WITH THE BEST



Li
Lithium

POWER THE POSSIBILITIES
RELIABLE LITHIUM-ION TECHNOLOGY

LITHIUM BATTERY ADVANTAGES



Long service life

4000 full charging cycles with at least 80% residual capacity.



Return on investment

Add flexibility to your operation, cost-saving in the long term, increased efficiencies.



Maintenance free

No topping up of water or checking acid levels.



High energy density

The high energy density of the Li-Ion battery ensures long working times and increases the high availability.



Cold area application

Li-Ion batteries maintain high performance at temperatures below freezing.



High safety and reliability

Intelligent battery management monitoring every important function, no emission of battery gasses.



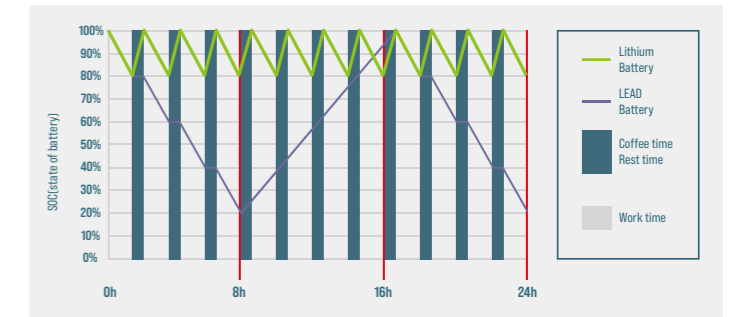
Opportunity charging

Full performance during several shifts thanks to effective interim charging.

FEATURES & BENEFITS THE HANGCHA DIFFERENCE

Efficiency

By quick opportunity charging any downtime, such as a lunch break, can be efficiently used and the battery is recharged in a very short period of time. Interim charging does not affect the battery service life.



Safety

- / Intelligent battery management monitoring every important function.
- / Higher user safety, thanks to acid-free use.
- / User friendly due to avoided battery change.
- / No emission of battery gasses.



QUESTION 1

Q: What are the characteristics of lithium batteries, especially when used in high and low temperature environments?

Charging temperature: 0 C - 65 C
Discharge temperature: -30 C - 65 C
Storage environment temperature: -30 C - 60 C

After the truck key switch is closed, the instrument battery condition needs to be checked:

1. Confirm that there is no battery system alarm message on the instrument panel.
2. Please check the remaining power before use. It is recommended to use the SOC between 50% and 100%.
3. If the SOC is lower than 20%, it is not recommended to continue using it. Please charge it as soon as possible.

QUESTION 2

Q: What is the charging time and usage time calculation of forklift lithium battery?

1. Available power of lithium battery (kWh) = rated voltage * rated power * 90% (To avoid over-discharge damaging the battery, the forklift is equipped with low power protection [less than 10%]).
 2. Charging time (h) = rated capacity of lithium battery (Ah) * 90% * charger output current (A).
 3. The power consumed for charging (kWh) = the available power of the lithium battery * 93% (the charging efficiency of the charger is calculated as 93%).
 4. Usage time (h) = available power of lithium battery * energy consumption data.
- For specific energy consumption values, please refer to the technical table on the sharing platform.

QUESTION 3

Q: How does Hangcha BMS work to ensure the safety of the lithium battery?

HANGCHA BMS (battery management system) can monitors the cells at all time. As a result, hangcha lithium power is the reliable solution.



Battery Safety Management:

- Overcharge/over discharge protection
- Overcurrent/over-temperature/low-temperature protection
- Multi-level fault diagnosis protection
- Double fault monitoring



Battery Parameter Detection:

- Battery voltage detection and analysis
- Battery current detection and analysis
- Battery temperature detection and analysis



Equilibrium Management:

- Equalization based on voltage mode
- Equalization based on time mode
- Equalization based on battery cell SOC
- Active/passive equalization optional



Other Features:

- Low cost, low power consumption
- Historical data record
- Flexible cascade expansion
- CRC data validation

LI-ION BATTERIES AND CHARGERS

IT'S FASTER AND EASIER WITH HANGCHA

Innovative, reliable lithium-ion technology (Lithium Iron-Phosphate), which are developed jointly by HANGCHA and CATL. Battery cells and modules are from CATL, with reliable quality, exclusively for HANGCHA.



Battery Capacity(Standard)
80V/160-460Ah

Battery weight:150-310kg

Integrated Battery Management System (BMS) continually monitors energy management and ensures reliable operation. HANGCHA provides Li-Ion battery (LiFePO4) with **6 years** or **12000 hours** warranty.

HANGCHA WARRANTY SERVICE

6 YEARS WARRANTY



Charger model:

SLC-80100
SLC-80200

Output voltage range (V):

80V charger: 40Vdc - 100Vdc

Output current range (A):

100A charger: 5A - 100A(SLC-80100)

200A charger: 5A - 200A(SLC-80200)

EVE Battery Capacity

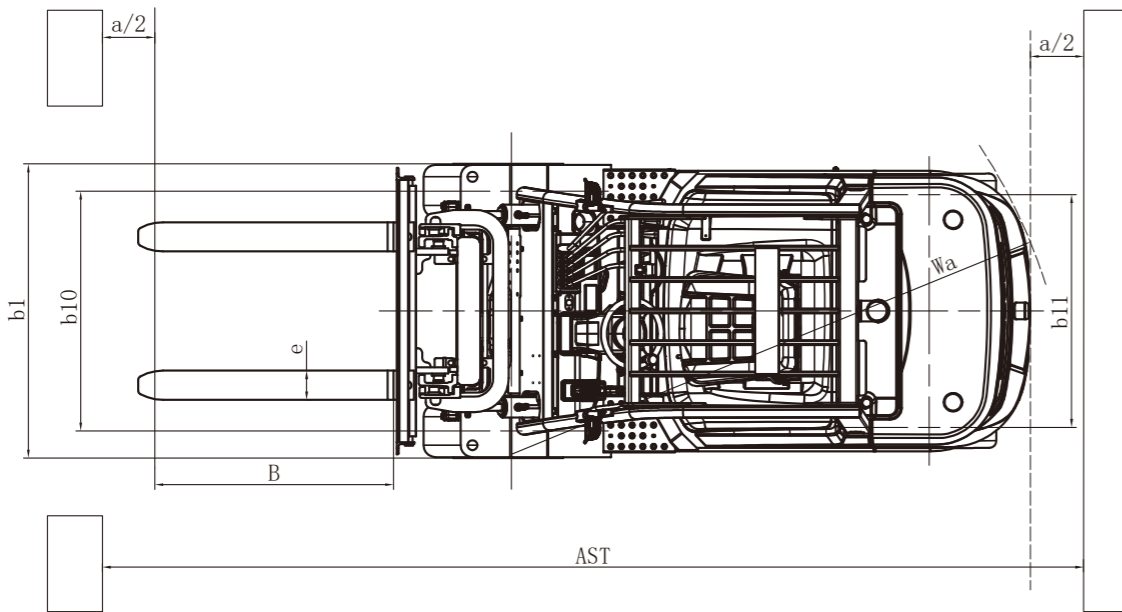
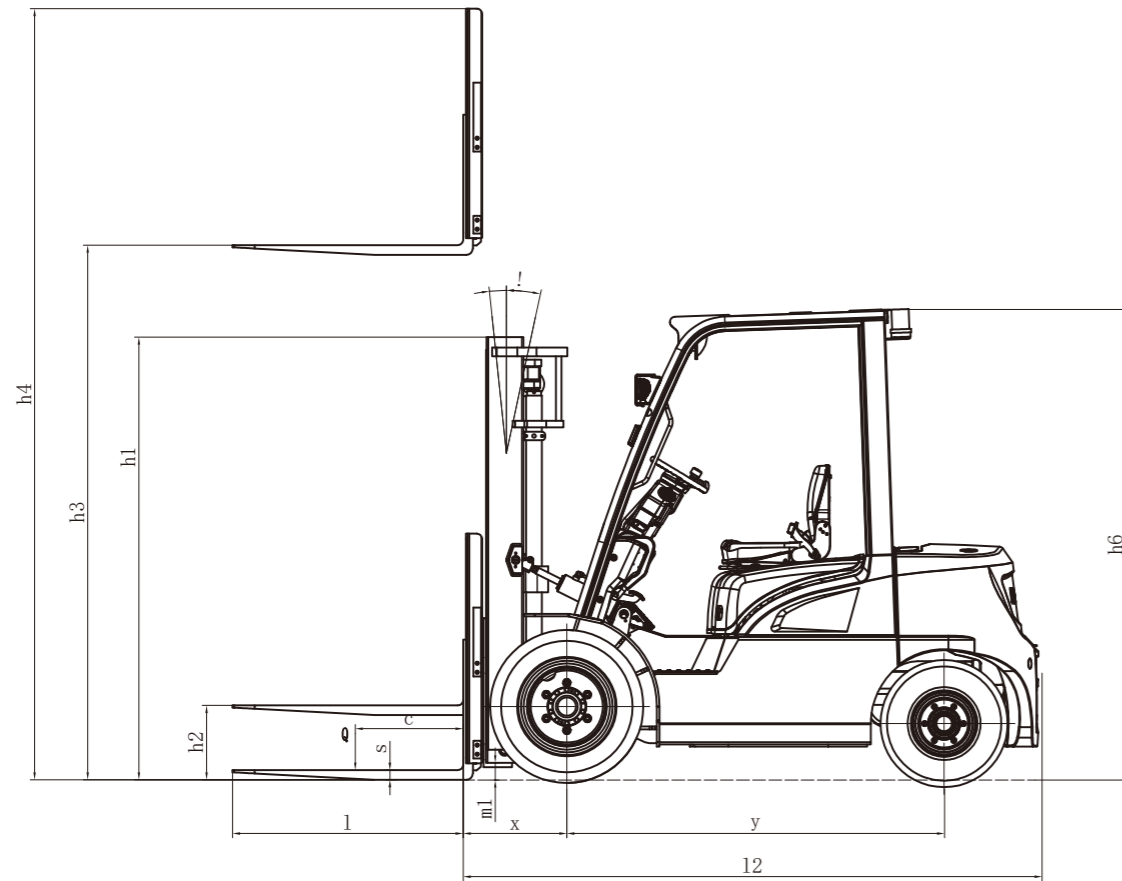
| Capacity(Ah) | 1.5-mini2.0t 80V | 2.0-2.5t 80V | | 3.0-3.8t 80V | | |
|--------------|------------------|--------------|---|--------------|---|----|
| | | Std. | H | Std. | H | H1 |
| 160 | ● | ○ | / | / | / | / |
| 230 | ○ | ● | / | ● | / | / |
| 280 | ○ | ○ | ○ | ○ | ○ | / |
| 304 | ○ | ○ | ● | ○ | ● | / |
| 460 | / | ○ | ○ | ○ | ○ | ● |
| 560 | / | / | / | / | ○ | ○ |
| 608 | / | / | / | / | / | ○ |

Note: ● Standard ; ○ Optional

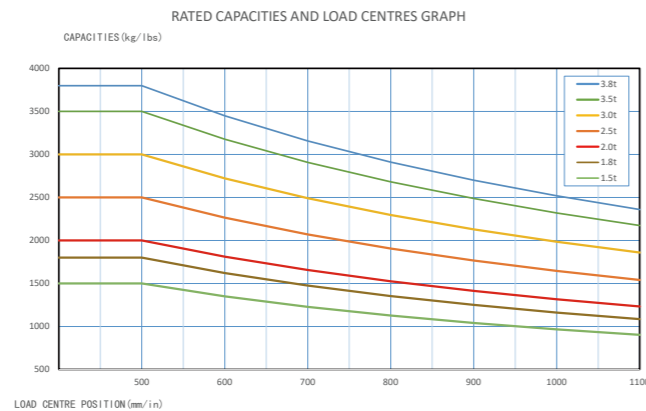
CATL Battery Capacity

| Capacity(Ah) | 1.5-mini2.0t 80V | 2.0-2.5t 80V | | 3.0-3.8t 80V | | |
|--------------|------------------|--------------|---|--------------|---|----|
| | | Std. | H | Std. | H | H1 |
| 228 | ○ | ○ | / | / | / | / |
| 302 | ○ | ○ | ○ | ○ | ○ | / |
| 375 | / | ○ | ○ | ○ | ○ | / |
| 456 | / | ○ | ○ | ○ | ○ | ○ |
| 604 | / | / | / | / | / | ○ |

Note: ● Standard ; ○ Optional



$AST = a + Wa + x + B$ a: Clearance (200mm)



1.5-mini2.0t Mast specification

| Type | Model | | | Lifting height | Lowered overall height | | Overall height | | | | Free lift height | | | | Tilt range | Capacity (Mast vertical to ground) | | | | | | | | |
|------------------------|-----------|-----------|-----------|----------------|------------------------|----------|------------------|----------|---------------|----------|------------------|----------|---------------|----------|------------|------------------------------------|------|------|------------------------|------|------|----------|------|------|
| | | | | | | | Without backrest | | With backrest | | Without backrest | | With backrest | | | Load Capacity at 500mm | | | Load Capacity at 500mm | | | | | |
| | 1.5t | 1.8t | mini2.0t | mm | mm | mm | mm | mm | mm | mm | mm | mm | mm | mm | mm | mm | mm | mm | mm | mm | mm | mm | mm | mm |
| | 1.5/1.8t | mini2.0t | 1.5/1.8t | mini2.0t | 1.5/1.8t | mini2.0t | 1.5/1.8t | mini2.0t | 1.5/1.8t | mini2.0t | 1.5/1.8t | mini2.0t | 1.5/1.8t | mini2.0t | FWD/RWD | (°) | 1.5t | 1.8t | mini2.0t | 1.5t | 1.8t | mini2.0t | 1.5t | 1.8t |
| Duplex wide view mast | A2A15M200 | A2A18M200 | XEX20M200 | 2000 | 1495 | 1495 | 2548 | 2504 | 2955 | 2955 | 155 | 160 | 155 | 160 | 6/6 | 1500 | 1800 | 2000 | 1500 | 1800 | 2000 | 1500 | 1800 | 2000 |
| | A2A15M250 | A2A18M250 | XEX20M250 | 2500 | 1745 | 1745 | 3048 | 3004 | 3455 | 3455 | 155 | 160 | 155 | 160 | 6/12 | 1500 | 1800 | 2000 | 1500 | 1800 | 2000 | 1500 | 1800 | 2000 |
| | A2A15M270 | A2A18M270 | XEX20M270 | 2700 | 1845 | 1845 | 3248 | 3204 | 3655 | 3655 | 155 | 160 | 155 | 160 | 6/12 | 1500 | 1800 | 2000 | 1500 | 1800 | 2000 | 1500 | 1800 | 2000 |
| | A2A15M300 | A2A18M300 | XEX20M300 | 3000 | 1995 | 1995 | 3548 | 3504 | 3955 | 3955 | 155 | 160 | 155 | 160 | 6/12 | 1500 | 1800 | 2000 | 1500 | 1800 | 2000 | 1500 | 1800 | 2000 |
| | A2A15M330 | A2A18M330 | XEX20M330 | 3300 | 2145 | 2145 | 3848 | 3804 | 4255 | 4255 | 155 | 160 | 155 | 160 | 6/12 | 1500 | 1800 | 2000 | 1500 | 1800 | 2000 | 1500 | 1800 | 2000 |
| | A2A15M360 | A2A18M360 | XEX20M360 | 3600 | 2345 | 2345 | 4148 | 4104 | 4555 | 4555 | 155 | 160 | 155 | 160 | 6/12 | 1500 | 1800 | 2000 | 1500 | 1800 | 2000 | 1500 | 1800 | 2000 |
| | A2A15M400 | A2A18M400 | XEX20M400 | 4000 | 2595 | 2595 | 4548 | 4504 | 4955 | 4955 | 155 | 160 | 155 | 160 | 6/6 | 1500 | 1800 | 2000 | 1500 | 1800 | 2000 | 1500 | 1800 | 2000 |
| | A2A15M430 | A2A18M430 | XEX20M430 | 4300 | 2745 | 2745 | 4848 | 4804 | 5255 | 5255 | 155 | 160 | 155 | 160 | 6/6 | 1500 | 1700 | 1900 | 1500 | 1700 | 1900 | 1500 | 1700 | 1900 |
| | A2A15M450 | A2A18M450 | XEX20M450 | 4500 | 2845 | 2845 | 5048 | 5040 | 5455 | 5455 | 155 | 160 | 155 | 160 | 6/6 | 1500 | 1650 | 1850 | 1500 | 1700 | 1900 | 1500 | 1700 | 1900 |
| | A2A15M480 | A2A18M480 | XEX20M480 | 4800 | 2995 | 2995 | 5348 | 5340 | 5755 | 5755 | 155 | 160 | 155 | 160 | 6/6 | 1400 | 1600 | 1800 | 1500 | 1650 | 1850 | 1500 | 1650 | 1850 |
| Duplex full-free mast | A2A15U250 | A2A18U250 | XEX20U250 | 2500 | 1760 | 1745 | 3074 | 3060 | 3445 | 3445 | 1185 | 1185 | 815 | 800 | 6/12 | 1500 | 1800 | 2000 | 1500 | 1800 | 2000 | 1400 | 1600 | 1750 |
| | A2A15U270 | A2A18U270 | XEX20U270 | 2700 | 1860 | 1845 | 3274 | 3260 | 3645 | 3645 | 1285 | 1285 | 915 | 900 | 6/12 | 1500 | 1800 | 2000 | 1500 | 1800 | 2000 | 1400 | 1600 | 1750 |
| | A2A15U300 | A2A18U300 | XEX20U300 | 3000 | 2010 | 1995 | 3574 | 3560 | 3945 | 3945 | 1435 | 1435 | 1065 | 1050 | 6/12 | 1500 | 1800 | 2000 | 1500 | 1800 | 2000 | 1400 | 1600 | 1750 |
| | A2A15U330 | A2A18U330 | XEX20U330 | 3300 | 2160 | 2145 | 3874 | 3860 | 4245 | 4245 | 1585 | 1585 | 1215 | 1200 | 6/12 | 1500 | 1800 | 2000 | 1500 | 1800 | 2000 | 1400 | 1600 | 1750 |
| | A2A15U360 | A2A18U360 | XEX20U360 | 3600 | 2310 | 2295 | 4174 | 4160 | 4545 | 4545 | 1735 | 1735 | 1365 | 1350 | 6/12 | 1500 | 1800 | 2000 | 1500 | 1800 | 2000 | 1400 | 1600 | 1750 |
| | A2A15U400 | A2A18U400 | XEX20U400 | 4000 | 2560 | 2545 | 4574 | 4560 | 4945 | 4945 | 1985 | 1985 | 1615 | 1600 | 6/12 | 1500 | 1800 | 2000 | 1500 | 1800 | 2000 | 1400 | 1600 | 1750 |
| | A2A15N400 | A2A18N400 | XEX20N400 | 4000 | 1960 | 1945 | 4694 | 4680 | 4955 | 4955 | 1276 | 1276 | 1015 | 1000 | 6/6 | 1500 | 1800 | 1950 | 1500 | 1800 | 2000 | 1400 | 1600 | 1750 |
| | A2A15N430 | A2A18N430 | XEX20N430 | 4300 | 2060 | 2045 | 4994 | 4980 | 5255 | 5255 | 1376 | 1376 | 1115 | 1100 | 6/6 | 1500 | 1650 | 1850 | 1500 | 1800 | 1950 | 1400 | 1600 | 1750 |
| | A2A15N450 | A2A18N450 | XEX20N450 | 4500 | 2110 | 2095 | 5194 | 5180 | 5455 | 5455 | 1426 | 1426 | 1165 | 1150 | 6/6 | 1500 | 1650 | 1800 | 1500 | 1750 | 1900 | 1400 | 1600 | 1750 |
| | A2A15N470 | A2A18N470 | XEX20N470 | 4700 | 2210 | 2195 | 5394 | 5380 | 5655 | 5655 | 1526 | 1526 | 1265 | 1250 | 6/6 | 1400 | 1600 | 1750 | 1500 | 1650 | 1850 | 1400 | 1600 | 1750 |
| Triplex full-free mast | A2A15N480 | A2A18N480 | XEX20N480 | 4800 | 2260 | 2195 | 5494 | 5337 | 5755 | 5755 | 1576 | 1642 | 1315 | 1250 | 6/6 | 1400 | 1600 | 1750 | 1500 | 1650 | 1850 | 1400 | 1600 | 1750 |
| | A2A15N500 | A2A18N500 | XEX20N500 | 5000 | 2360 | 2295 | 5694 | 5537 | 5955 | 5955 | 1676 | 1742 | 1415 | 1350 | 6/6 | 1400 | 1550 | 1700 | 1450 | 1600 | 1800 | 1400 | 1550 | 1750 |
| | A2A15N550 | A2A18N550 | XEX20N550 | 5500 | 2560 | 2445 | 6194 | 6037 | 6455 | 6455 | 1876 | 1892 | 1615 | 1500 | 3/6 | 1250 | 1500 | 1650 | 1350 | 1550 | 1750 | 1100 | 1300 | 1450 |
| | A2A15N600 | A2A18N600 | XEX20N600 | 6000 | 2810 | 2645 | 6694 | 6537 | 6955 | 6955 | 2126 | 2092 | 1865 | 1700 | 3/6 | 1100 | 1300 | 1450 | 1150 | 1400 | 1500 | 1100 | 1300 | 1450 |

SUBTRACT 100kg WITH INTEGRAL SIDESHIFTER, SUBTRACT 150kg WITH EXTERNAL SIDESHIFTER.

2-2.5t Mast specification

| Type | Model | | Lifting height | Lowered overall height | Overall height | | Free lift height | | Tilt range | Capacity (Mast vertical to ground) | | | |
|-----------------------|------------------------|-----------|----------------|------------------------|------------------|---------------|------------------|---------------|------------|------------------------------------|------|------------------------|------|
| | | | | | Without backrest | With backrest | Without backrest | With backrest | | Load Capacity at 500mm | | Load Capacity at 500mm | |
| | mm | mm | mm | mm | mm | mm | mm | mm | (°) | 2t | 2.5t | 2t | 2.5t |
| | kg | kg | kg | kg | kg | kg | kg | kg | kg | kg | kg | kg | kg |
| Duplex wide view mast | A2A25M200 | | 2000 | 1499 | 2707 | 3046 | 160 | 160 | 6/6 | 2000 | 2500 | 2000 | 2500 |
| | A2A25M250 | | 2500 | 1749 | 3207 | 3546 | 160 | 160 | 6/12 | 2000 | 2500 | 2000 | 2500 |
| | A2A25M270 | | 2700 | 1849 | 3407 | 3746 | 160 | 160 | 6/12 | 2000 | 2500 | 2000 | 2500 |
| | A2A25M300 | | 3000 | 1999 | 3707 | 4046 | 160 | 160 | 6/12 | 2000 | 2500 | 2000 | 2500 |
| | A2A25M330 | | 3300 | 2149 | 4007 | 4346 | 160 | 160 | 6/12 | 2000 | 2500 | 2000 | 2500 |
| | A2A25M360 | | 3600 | 2349 | 4307 | 4646 | 160 | 160 | 6/12 | 2000 | 2500 | 2000 | 2500 |
| | A2A25M400 | | 4000 | 2599 | 4707 | 5046 | 160 | 160 | 6/6 | 2000 | 2500 | 2000 | 2500 |
| | A2A25M430 | | 4300 | 2749 | 5007 | 5346 | 160 | 160 | 6/6 | 2000 | 2500 | 2000 | 2500 |
| | A2A25M450 | | 4500 | 2849 | 5207 | 5546 | 160 | 160 | 6/6 | 2000 | 2450 | 2000 | 2500 |
| | A2A25M480 | | 4800 | 2999 | 5507 | 5846 | 160 | 160 | 6/6 | 1950 | 2350 | 2000 | 2450 |
| Duplex full-free mast | A2A25M500 | | 5000 | 3099 | 5707 | 6046 | 160 | 160 | 6/6 | 1850 | 2300 | 1950 | 2350 |
| | A2A25M550 | | 5500 | 3349 | 6207 | 6546 | 160 | 160 | 3/6 | 1750 | 2150 | 1900 | 2200 |
| | A2A25M600 | | 6000 | 3599 | 6707 | 7046 | 160 | 160 | 3/6 | 1550 | 1900 | 1800 | 2000 |
| | A2A25U250 | | 2500 | 1764 | 3179 | 3546 | 1025 | 619 | 6/12 | 2000 | 2500 | 2000 | 2500 |
| | A2A25U270 | | 2700 | 1864 | 3379 | 3746 | 1125 | 719 | 6/12 | 2000 | 2500 | 2000 | 2500 |
| | A2A25U300 | | 3000 | 2014 | 3679 | 4046 | 1275 | 869 | 6/12 | 2000 | 2500 | 2000 | 2500 |
| | A2A25U330 | | 3300 | 2164 | 3979 | 4346 | 1425 | 1019 | 6/12 | 2000 | 2500 | 2000 | 2500 |
| | A2A25U360 | | 3600 | 2314 | 4279 | 4646 | 1575 | 1169 | 6/12 | 2000 | 2500 | 2000 | 2500 |
| | A2A25U400 | | 4000 | 2564 | 4679 | 5046 | 1825 | 1419 | 6/12 | 2000 | 2500 | 2000 | 2500 |
| | Triplex full-free mast | A2A25N400 | | 4000 | 1964 | 4739 | 5046 | 1285 | 918 | 6/6 | 2000 | 2500 | 2000 |
| A2A25N430 | | | 4300 | 2064 | 5039 | 5346 | 1385 | 1018 | 6/6 | 2000 | 2450 | 2000 | 2500 |
| A2A25N450 | | | 4500 | 2114 | 5239 | 5546 | 1435 | 1068 | 6/6 | 2000 | 2350 | 2000 | 2450 |
| A2A25N470 | | | 4700 | 2214 | 5439 | 5746 | 1535 | 1168 | 6/6 | 1950 | 2250 | 2000 | 2350 |
| A2A25N480 | | | 4800 | 2264 | 5539 | 5846 | 1585 | 1218 | 6/6 | 1950 | 2250 | 2000 | 2350 |
| A2A25N500 | | | 5000 | 2364 | 5739 | 6046 | 1685 | 1318 | 6/6 | 1850 | 2150 | 1950 | 2250 |
| A2A25N550 | | | 5500 | 2564 | 6239 | 6546 | 1885 | 1518 | 3/6 | 1750 | 2050 | 1900 | 2100 |
| A2A25N600 | | | 6000 | 2814 | 6739 | 7046 | 2135 | 1768 | 3/6 | 1550 | 1850 | 1800 | 1950 |
| A2A25N650 | | | 6500 | 3014 | 7239 | 7546 | 2335 | 1968 | 3/6 | / | / | 1550 | 1800 |
| A2A25N700 | | | 7000 | 3264 | 7764 | 8046 | 2500 | 2218 | 3/6 | / | / | 1150 | 1450 |

SUBTRACT 100kg WITH INTEGRAL SIDESHIFTER, SUBTRACT 150kg WITH EXTERNAL SIDESHIFTER.

3-3.8t Mast specification

| Type | Model | | Lifting height | Lowered overall height | | Overall height | | | | Free lift height | | | | Tilt range | Capacity (Mast vertical to ground) | | | | | |
|------------------------|-----------------------|-----------|----------------|------------------------|----------|------------------|----------|---------------|----------|------------------|----------|---------------|----------|------------|------------------------------------|------|------|-------------|------|------|
| | | | | | | Without backrest | | With backrest | | Without backrest | | With backrest | | | Load Capacity at 500mm | | | | | |
| | 3t | 3.5/3.8t | mm | 3t | 3.5/3.8t | 3t | 3.5/3.8t | 3t | 3.5/3.8t | 3t | 3.5/3.8t | 3t | 3.5/3.8t | FWD/RWD | Single Tire | | | Double tire | | |
| Duplex wide view mast | A2A30M200 | A2A35M200 | 2000 | 1554 | 1669 | 2767 | 2842 | 3145 | 3145 | 165 | 170 | 165 | 170 | 6/6 | 3000 | 3500 | 3800 | 3000 | 3500 | 3800 |
| | A2A30M250 | A2A35M250 | 2500 | 1804 | 1919 | 3267 | 3342 | 3645 | 3645 | 165 | 170 | 165 | 170 | 6/12 | 3000 | 3500 | 3800 | 3000 | 3500 | 3800 |
| | A2A30M270 | A2A35M270 | 2700 | 1904 | 2019 | 3467 | 3542 | 3845 | 3845 | 165 | 170 | 165 | 170 | 6/12 | 3000 | 3500 | 3800 | 3000 | 3500 | 3800 |
| | A2A30M300 | A2A35M300 | 3000 | 2054 | 2169 | 3767 | 3842 | 4145 | 4145 | 165 | 170 | 165 | 170 | 6/12 | 3000 | 3500 | 3800 | 3000 | 3500 | 3800 |
| | A2A30M330 | A2A35M330 | 3300 | 2204 | 2319 | 4067 | 4142 | 4445 | 4445 | 165 | 170 | 165 | 170 | 6/12 | 3000 | 3500 | 3800 | 3000 | 3500 | 3800 |
| | A2A30M360 | A2A35M360 | 3600 | 2404 | 2469 | 4367 | 4442 | 4745 | 4745 | 165 | 170 | 165 | 170 | 6/12 | 3000 | 3500 | 3800 | 3000 | 3500 | 3800 |
| | A2A30M400 | A2A35M400 | 4000 | 2654 | 2769 | 4767 | 4842 | 5145 | 5145 | 165 | 170 | 165 | 170 | 6/12 | 3000 | 3500 | 3800 | 3000 | 3500 | 3800 |
| | A2A30M430 | A2A35M430 | 4300 | 2804 | 2919 | 5067 | 5142 | 5445 | 5445 | 165 | 170 | 165 | 170 | 6/6 | 3000 | 3400 | 3700 | 3000 | 3500 | 3800 |
| | A2A30M450 | A2A35M450 | 4500 | 2904 | 3019 | 5267 | 5342 | 5645 | 5645 | 165 | 170 | 165 | 170 | 6/6 | 3000 | 3300 | 3600 | 3000 | 3400 | 3700 |
| | A2A30M480 | A2A35M480 | 4800 | 3054 | 3169 | 5567 | 5642 | 5945 | 5945 | 165 | 170 | 165 | 170 | 6/6 | 2950 | 3200 | 3500 | 3000 | 3300 | 3600 |
| | A2A30M500 | A2A35M500 | 5000 | 3154 | 3269 | 5767 | 5842 | 6145 | 6145 | 165 | 170 | 165 | 170 | 6/6 | 2850 | 3100 | 3400 | 2900 | 3200 | 3500 |
| | A2A30M550 | A2A35M550 | 5500 | 3404 | 3519 | 6267 | 6342 | 6645 | 6645 | 165 | 170 | 165 | 170 | 3/6 | 2670 | 3000 | 3300 | 2750 | 3100 | 3400 |
| | A2A30M600 | A2A35M600 | 6000 | 3654 | 3769 | 6767 | 6842 | 7145 | 7145 | 165 | 170 | 165 | 170 | 3/6 | 2350 | 2650 | 2950 | 2500 | 2800 | 3100 |
| | Duplex full-free mast | A2A30U250 | A2A35U250 | 2500 | 1834 | 1934 | 3316 | 3391 | 3645 | 3645 | 1018 | 1043 | 689 | 789 | 6/12 | 3000 | 3500 | 3800 | 3000 | 3500 |
| A2A30U270 | | A2A35U270 | 2700 | 1934 | 2034 | 3516 | 3591 | 3845 | 3845 | 1118 | 1143 | 789 | 889 | 6/12 | 3000 | 3500 | 3800 | 3000 | 3500 | 3800 |
| A2A30U300 | | A2A35U300 | 3000 | 2084 | 2184 | 3816 | 3891 | 4145 | 4145 | 1268 | 1293 | 939 | 1039 | 6/12 | 3000 | 3500 | 3800 | 3000 | 3500 | 3800 |
| A2A30U330 | | A2A35U330 | 3300 | 2234 | 2334 | 4116 | 4191 | 4445 | 4445 | 1418 | 1443 | 1089 | 1189 | 6/12 | 3000 | 3500 | 3800 | 3000 | 3500 | 3800 |
| A2A30U360 | | A2A35U360 | 3600 | 2384 | 2484 | 4416 | 4491 | 4745 | 4745 | 1568 | 1593 | 1239 | 1339 | 6/12 | 3000 | 3500 | 3800 | 3000 | 3500 | 3800 |
| A2A30U400 | | A2A35U400 | 4000 | 2634 | 2734 | 4816 | 4891 | 5145 | 5145 | 1818 | 1843 | 1489 | 1589 | 6/12 | 3000 | 3500 | 3800 | 3000 | 3500 | 3800 |
| Triplex full-free mast | A2A30N400 | A2A35N400 | 4000 | 2019 | 2119 | 4816 | 4891 | 5145 | 5145 | 1203 | 1228 | 874 | 974 | 6/6 | 3000 | 3400 | 3700 | 3000 | 3500 | 3800 |
| | A2A30N430 | A2A35N430 | 4300 | 2119 | 2219 | 5116 | 5191 | 5445 | 5445 | 1303 | 1328 | 974 | 1074 | 6/6 | 3000 | 3300 | 3600 | 3000 | 3400 | 3700 |
| | A2A30N450 | A2A35N450 | 4500 | 2169 | 2319 | 5316 | 5391 | 5645 | 5645 | 1353 | 1428 | 1024 | 1174 | 6/6 | 3000 | 3200 | 3500 | 3000 | 3300 | 3600 |
| | A2A30N470 | A2A35N470 | 4700 | 2269 | 2419 | 5516 | 5591 | 5845 | 5845 | 1453 | 1528 | 1124 | 1274 | 6/6 | 2900 | 3100 | 3400 | 2950 | 3200 | 3500 |
| | A2A30N480 | A2A35N480 | 4800 | 2319 | 2469 | 5616 | 5691 | 5945 | 5945 | 1503 | 1578 | 1174 | 1324 | 6/6 | 2900 | 3100 | 3400 | 2950 | 3200 | 3500 |
| | A2A30N500 | A2A35N500 | 5000 | 2419 | 2619 | 5816 | 5891 | 6145 | 6145 | 1603 | 1728 | 1274 | 1474 | 6/6 | 2850 | 3100 | 3350 | 2900 | 3200 | 3450 |
| | A2A30N550 | A2A35N550 | 5500 | 2619 | 2869 | 6316 | 6391 | 6645 | 6645 | 1803 | 1978 | 1474 | 1724 | 3/6 | 2670 | 3000 | 3250 | 2750 | 3100 | 3350 |
| | A2A30N600 | A2A35N600 | 6000 | 2869 | 3119 | 6816 | 6919 | 7145 | 7145 | 2053 | 2200 | 1724 | 1974 | 3/6 | 2350 | 2650 | 2900 | 2500 | 2800 | 3050 |
| | A2A30N650 | A2A35N650 | 6500 | 3119 | 3369 | 7316 | 7391 | 7645 | 7645 | 2303 | 2478 | 1974 | 2224 | 3/6 | / | / | / | 2200 | 2400 | 2650 |
| | A2A30N700 | A2A35N700 | 7000 | 3369 | 3619 | 7816 | 7919 | 8145 | 8145 | 2553 | 2700 | 2274 | 2474 | 3/6 | / | / | / | 1850 | 2050 | 2250 |

SUBTRACT 100kg WITH INTEGRAL SIDESHIFTER, SUBTRACT 200kg WITH EXTERNAL SIDESHIFTER.
3.5-3.8t can be equipped with 4.5m triplex mast for container work(2169mm).

3-3.8(H1)t Mast specification

| Type | Model | | Lifting height | Lowered overall height | | Overall height | | | | Free lift height | | | | Tilt range | Capacity (Mast vertical to ground) | | | | | |
|------------------------|-----------------------|-----------|----------------|------------------------|----------|------------------|----------|---------------|----------|------------------|----------|---------------|----------|------------|------------------------------------|------|------|-------------|------|------|
| | | | | | | Without backrest | | With backrest | | Without backrest | | With backrest | | | Load Capacity at 500mm | | | | | |
| | 3t | 3.5/3.8t | mm | 3t | 3.5/3.8t | 3t | 3.5/3.8t | 3t | 3.5/3.8t | 3t | 3.5/3.8t | 3t | 3.5/3.8t | FWD/RWD | Single Tire | | | Double tire | | |
| Duplex wide view mast | XR30M200 | XRZ35M200 | 2000 | 1554 | 1669 | 2767 | 2842 | 3145 | 3145 | 165 | 170 | 165 | 170 | 6/6 | 3000 | 3500 | 3800 | 3000 | 3500 | 3800 |
| | XR30M250 | XRZ35M250 | 2500 | 1804 | 1919 | 3267 | 3342 | 3645 | 3645 | 165 | 170 | 165 | 170 | 6/12 | 3000 | 3500 | 3800 | 3000 | 3500 | 3800 |
| | XR30M270 | XRZ35M270 | 2700 | 1904 | 2019 | 3467 | 3542 | 3845 | 3845 | 165 | 170 | 165 | 170 | 6/12 | 3000 | 3500 | 3800 | 3000 | 3500 | 3800 |
| | XR30M300 | XRZ35M300 | 3000 | 2054 | 2169 | 3767 | 3842 | 4145 | 4145 | 165 | 170 | 165 | 170 | 6/12 | 3000 | 3500 | 3800 | 3000 | 3500 | 3800 |
| | XR30M330 | XRZ35M330 | 3300 | 2204 | 2319 | 4067 | 4142 | 4445 | 4445 | 165 | 170 | 165 | 170 | 6/12 | 3000 | 3500 | 3800 | 3000 | 3500 | 3800 |
| | XR30M360 | XRZ35M360 | 3600 | 2404 | 2469 | 4367 | 4442 | 4745 | 4745 | 165 | 170 | 165 | 170 | 6/12 | 3000 | 3500 | 3800 | 3000 | 3500 | 3800 |
| | XR30M400 | XRZ35M400 | 4000 | 2654 | 2769 | 4767 | 4842 | 5145 | 5145 | 165 | 170 | 165 | 170 | 6/12 | 3000 | 3500 | 3800 | 3000 | 3500 | 3800 |
| | XR30M430 | XRZ35M430 | 4300 | 2804 | 2919 | 5067 | 5142 | 5445 | 5445 | 165 | 170 | 165 | 170 | 6/6 | 3000 | 3400 | 3700 | 3000 | 3500 | 3800 |
| | XR30M450 | XRZ35M450 | 4500 | 2904 | 3019 | 5267 | 5342 | 5645 | 5645 | 165 | 170 | 165 | 170 | 6/6 | 3000 | 3300 | 3600 | 3000 | 3400 | 3700 |
| | XR30M480 | XRZ35M480 | 4800 | 3054 | 3169 | 5567 | 5642 | 5945 | 5945 | 165 | 170 | 165 | 170 | 6/6 | 2950 | 3200 | 3500 | 3000 | 3300 | 3600 |
| | XR30M500 | XRZ35M500 | 5000 | 3154 | 3269 | 5767 | 5842 | 6145 | 6145 | 165 | 170 | 165 | 170 | 6/6 | 2850 | 3100 | 3400 | 2900 | 3200 | 3500 |
| | XR30M550 | XRZ35M550 | 5500 | 3404 | 3519 | 6267 | 6342 | 6645 | 6645 | 165 | 170 | 165 | 170 | 3/6 | 2670 | 3000 | 3300 | 2750 | 3100 | 3400 |
| | XR30M600 | XRZ35M600 | 6000 | 3654 | 3769 | 6767 | 6842 | 7145 | 7145 | 165 | 170 | 165 | 170 | 3/6 | 2350 | 2650 | 2950 | 2500 | 2800 | 3100 |
| | Duplex full-free mast | XR30U250 | XRZ35U250 | 2500 | 1834 | 1934 | 3316 | 3391 | 3645 | 3645 | 1018 | 1043 | 689 | 789 | 6/12 | 3000 | 3500 | 3800 | 3000 | 3500 |
| XR30U270 | | XRZ35U270 | 2700 | 1934 | 2034 | 3516 | 3591 | 3845 | 3845 | 1118 | 1143 | 789 | 889 | 6/12 | 3000 | 3500 | 3800 | 3000 | 3500 | 3800 |
| XR30U300 | | XRZ35U300 | 3000 | 2084 | 2184 | 3816 | 3891 | 4145 | 4145 | 1268 | 1293 | 939 | 1039 | 6/12 | 3000 | 3500 | 3800 | 3000 | 3500 | 3800 |
| XR30U330 | | XRZ35U330 | 3300 | 2234 | 2334 | 4116 | 4191 | 4445 | 4445 | 1418 | 1443 | 1089 | 1189 | 6/12 | 3000 | 3500 | 3800 | 3000 | 3500 | 3800 |
| XR30U360 | | XRZ35U360 | 3600 | 2384 | 2484 | 4416 | 4491 | 4745 | 4745 | 1568 | 1593 | 1239 | 1339 | 6/12 | 3000 | 3500 | 3800 | 3000 | 3500 | 3800 |
| XR30U400 | | XRZ35U400 | 4000 | 2634 | 2734 | 4816 | 4891 | 5145 | 5145 | 1818 | 1843 | 1489 | 1589 | 6/12 | 3000 | 3500 | 3800 | 3000 | 3500 | 3800 |
| Triplex full-free mast | XR30N400 | XRZ35N400 | 4000 | 2019 | 2119 | 4816 | 4891 | 5145 | 5145 | 1203 | 1228 | 874 | 974 | 6/6 | 3000 | 3400 | 3700 | 3000 | 3500 | 3800 |
| | XR30N430 | XRZ35N430 | 4300 | 2119 | 2219 | 5116 | 5191 | 5445 | 5445 | 1303 | 1328 | 974 | 1074 | 6/6 | 3000 | 3300 | 3600 | 3000 | 3400 | 3700 |
| | XR30N450 | XRZ35N450 | 4500 | 2169 | 2319 | 5316 | 5391 | 5645 | 5645 | 1353 | 1428 | 1024 | 1174 | 6/6 | 3000 | 3200 | 3500 | 3000 | 3300 | 3600 |
| | XR30N470 | XRZ35N470 | 4700 | 2269 | 2419 | 5516 | 5591 | 5845 | 5845 | 1453 | 1528 | 1124 | 1274 | 6/6 | 2900 | 3100 | 3400 | 2950 | 3200 | 3500 |
| | XR30N480 | XRZ35N480 | 4800 | 2319 | 2469 | 5616 | 5691 | 5945 | 5945 | 1503 | 1578 | 1174 | 1324 | 6/6 | 2900 | 3100 | 3400 | 2950 | 3200 | 3500 |
| | XR30N500 | XRZ35N500 | 5000 | 2419 | 2619 | 5816 | 5891 | 6145 | | | | | | | | | | | | |

Features

| Safety configuration | Standard | Options |
|--|----------|---------|
| Emergency power-off switch | ● | |
| Fuse box | ● | |
| Soft landing | ● | |
| Reversing radar | | ○ |
| OPS system | | ○ |
| Fire extinguisher | | ○ |
| Ascending buffering | | ○ |
| Parking brake | | |
| Mechanical handbrake | ● | |
| EPB(Electric Parking Brake) | | ○ |
| Instrument rack space | | |
| Smart color-screen instrument (speed mode selection) | ● | |
| Combination switch | ● | |
| Cigarette lighter | | ○ |
| USB port | | ○ |
| Electronic code lock (start by swiping a card) | | ○ |
| Driving space | | |
| Standard overhead guard | ● | |
| Central rear view mirror | ● | |
| Front windshield | | ○ |
| PVC ceiling | | ○ |
| Cab | | ○ |
| Electric fan | | ○ |
| Left and right rear view mirrors | | ○ |
| Seat | | |
| Standard seat | ● | |
| Fully-suspended seat | | ○ |
| Semi-suspended seat | | ○ |
| Other standard configuration | | |
| Drive and lifting controllers | ● | |
| Driving and lifting motors | ● | |
| Oil pump reducer | ● | |
| Silent gear pump | ● | |
| DC-DC converter | ● | |
| Pedal pad | ● | |
| Traction pin | ● | |
| Integral stamped side panel and hood | ● | |

