

Standard and Optional Equipment

Standard Equipment

- Linde digital controller
- German brand motors
- Lead acid battery
- German gear pump
- Integrated steering axle
- Fork landing cushion
- Load backrest
- Pneumatic tires
- Warp-around seat
- Seat safety switch
- Small diameter steering wheel
- Linde single pedal system
- Linde central lever
- 4,3" colour display
- USB charger
- LED headlight and LED rear light
- Vertical battery change

Optional Equipment

- Twin pedal
- SE tires
- Integrated side shifter
- Hook-on side shifter
- One, two additional hydraulic circuits for attachments
- Flashing beacon
- Blue Spot

Other Options Available on Request



Linde Battery Counterbalance Forklift Truck

CAPACITY 2000, 2500 kg
E20B-01, E25B-01 **1293**

Ergonomics Comfort Safety

Ergonomic design, spacious operating compartment, comfort driving Central control lever realizes simultaneous mast lifting, lowering and tilting; Small diameter steering wheel effectively reduces driver shoulder turning and reduce driver fatigue

Surging Power Flexible Operation

With over 50 years of German experience in electric forklift truck software programming. Short acceleration time to achieve fast direction change; 18% climbing ability with full load, start at half slope and keep ≥2km/h travel speed

Power on Demand Long Battery Remaining

Equipped with potentiometer digital control system, precisecalculation to achieve power on-demand, real-time control drive and mast operation speed. Smart driving system by adopting advanced entire controller to schedule drive and pump motor modules, high efficiency and less energy consumption

Modular Design Easy Maintenance

Thanks to modular design, it simplifies service process and reduces 15%-20% of checking & repairing time. Configured with mobile phone accessible diagnostic App, improving troubleshooting convenience. Apply higher quality oils and filters, reducing replacement frequency and maintenance cost

Features

Linde digital controller

- Over 50 years of German experience in electric forklift truck software programming
- German brand motors



4,3" standard display

- Wide screen design, clearer visibility
- Display of main fault messages
- The screen display real-time traveling speed, battery status, alarm and operating hours that easier to scan and understand
- 3 power settings could be adjusted in display



Linde operator's compartment

- Central lever
- Small diameter steering wheel
- Foot parking brake

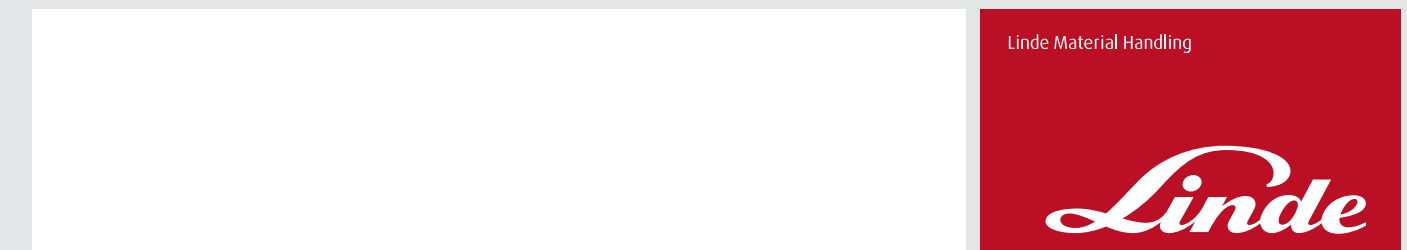


Linde clear-view mast

- Superb visibility through slim-profile
- Sections of mast full load capacity up to maximum lift
- High residual capacity

Subject to modification in the interests of progress, illustration and technical details not binding for actual constructions and may show the optional equipments.

1293_E20B-01/E25B-01_D-01_202111



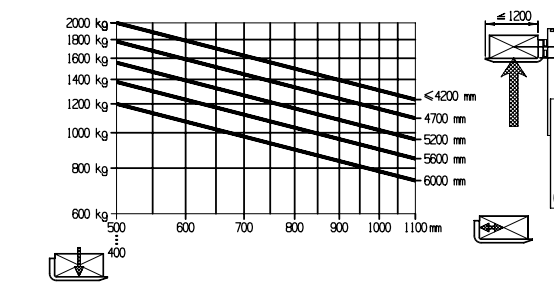
Technical Data

		LINDE		LINDE	
		E20B-01	E25B-01	E20B-01	E25B-01
Characteristics	1.1	Manufacturer		LINDE	LINDE
	1.21	Model designation		E20B-01	E25B-01
	1.3	Drive: electric (battery type, mains, ...), diesel, petrol, fuel gas		Electric	Electric
	1.4	Operator type: hand, pedestrian, standing, seated, order-picker		Seated	Seated
	1.5	Rated capacity/rated load	Q (t)	2.0	2.5
	1.6	Load centre distance	c (mm)	500	500
	1.7	Load distance, centre of drive axle to fork	x (mm)	464	464
	1.8	Wheelbase	y (mm)	1545	1545
Weights	2.1	Service weight	kg	3660	4140
	2.2	Axle loading, laden front/rear	kg	5008/652	5805/835
	2.3	Axle loading, unladen front/rear	kg	1760/1900	1745/2395
Wheels	3.1	Tyres: solid rubber, superelastic, pneumatic, polyurethane		pneumatic	pneumatic
	3.2	Tyre size, front		23X9-10	23X9-10
	3.3	Tyre size, rear		18x7-8	18x7-8
	3.5	Wheels, number front/rear (x=driven wheels)		2X /2	2X /2
	3.6	Tread, front	b10 (mm)	1040	1040
	3.7	Tread, rear	b11 (mm)	950	950
	Dimensions	4.1	Tilt of mast/fork carriage forward/backward	a/b (°)	6/10
4.2		Height of mast, lowered	h1 (mm)	2070	2068
4.3		Free lift	h2 (mm)	150	150
4.4		Lift	h3 (mm)	3000	3000
4.5		Height of mast, extended	h4 (mm)	4045	4045
4.6		Height of overhead guard (cabin)	h6 (mm)	2150	2150
4.7		Height of seat/stand-on platform	h7 (mm)	1166	1166
4.8		Coupling height	h10 (mm)	660	660
4.19		Overall length	l1 (mm)	3420	3420
4.20		Length to face of forks	l2 (mm)	2420	2420
4.21		Overall width	b1 / b2 (mm)	1265	1265
4.22		Fork dimensions ISO 2331	sxexl (mm)	45x100x1000	45x100x1000
4.23		Fork carriage to ISO 2338, class/type A, B		2A	2A
4.24		Fork-carriage width	b3 (mm)	1040	1040
4.31		Ground clearance, laden, below mast	m1 (mm)	106	102
4.32		Ground clearance, centre of wheelbase	m2 (mm)	120	120
4.33		Aisle width with pallet 1000x1200 across forks	Ast (mm)	3760	3760
4.34		Aisle width with pallet 800x1200 along forks	Ast (mm)	3960	3960
4.35		Turning radius	Wa (mm)	2096	2096
4.36	Minimum pivoting point distance	b13 (mm)	582	582	
Performances	5.1	Travel speed, laden/unladen	km/h	15/15	15/15
	5.2	Lift speed, laden/unladen	m/s	0.33/0.45	0.28/0.45
	5.3	Lowering speed, laden/unladen	m/s	0.43/0.47	0.43/0.47
	5.4	Max. drawbar pull, laden/unladen	N	11900 / 9600	11700/9500
	5.5	Max. gradeability, laden/unladen	%	18/20	18/20
	5.6	Acceleration time, laden/unladen	s	6.0/5.5	6.3/5.5
	5.7	Service brake		Mechanical hydraulic	Mechanical hydraulic
Drive	6.1	Drive motor rating S2 60 min	kW	10.2	10.2
	6.2	Lift motor rating at 53 15%	kW	11.5	11.5
	6.3	Battery according to DIN 43531/35/36 A, B, C, no		DIN 43536 A	DIN 43536 A
	6.4	Battery voltage/nominal capacity K5	V/Ah	80/360	80/360
	6.5	Battery weight (E)	kg	990	990
Others	7.1	Operating pressure for attachments	bar	145	170
	7.2	Oil flow for attachments	l/min	24	24
	7.3	Sound pressure level at the driver's seat	dB(A)	65	65

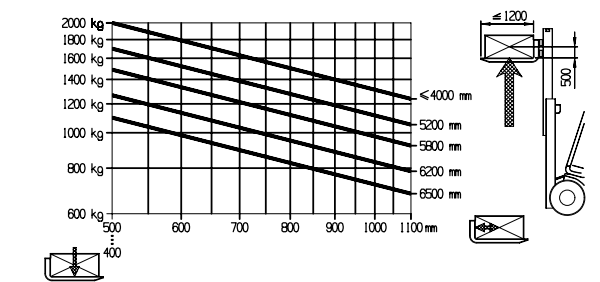
Figures for standard version may vary when options equipment is fitted

Lifting Capacity Diagram for Standard/Duplex Mast/Triplex Mast with Standard Fork Carriage

E20B-01

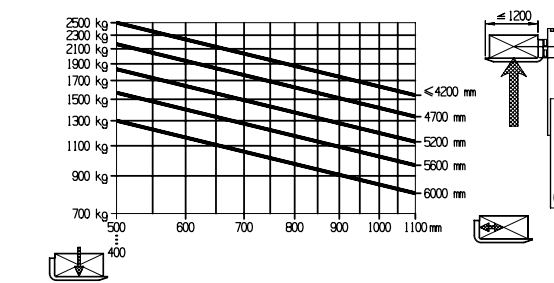


Standard, Duplex mast

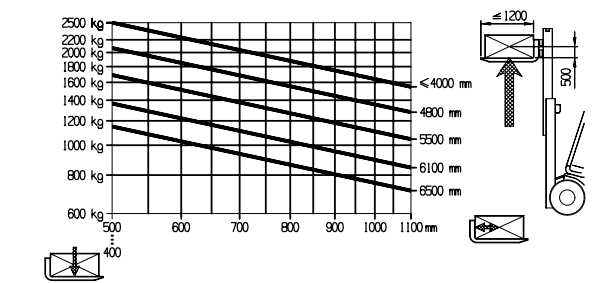


Triplex mast

E25B-01



Standard, Duplex mast



Triplex mast

Mast Datasheet (in: mm)

Standard masts (mm)		E20/25B-01							
Lift height	h3	3000	3300	3500	3600	4000	4500	5000	5500
Retracted height	h1	2070	2220	2320	2370	2620	2870	3120	3420
Free lift	h2	150	150	150	150	150	150	150	150
Height of overall at max. lift	h4	4045	4345	4545	4645	5045	5545	6045	6545

Duplex masts (mm)		E20/25B-01				
Lift height	h3	3000	3300	3500	4000	4500
Retracted height (Height of mast, lowered)	h1	2036	2186	2286	2586	2836
Free lift	h2	1385	1535	1635	1935	2185
Height overall at max. lift	h4	4045	4345	4545	5045	5545

Triplex masts (mm)		E20/25B-01							
Lift height	h3	4100	4550	4650	5000	5250	5500	6000	6500
Retracted height (Height of mast, lowered)	h1	1986	2186	2186	2336	2486	2586	2836	3036
Free lift	h2	1335	1535	1535	1685	1835	1935	2185	2385
Height overall at max. lift	h4	5145	5595	5695	6045	6295	6545	7045	7545